



CAN Cable Installation Instructions

PART NO.
33-037

VEHICLE
Club Car (LG Chem)

FIRMWARE
CLUBLG

■ **WARNING**

Wear safety glasses and insulated gloves before beginning. Ensure the battery is turned off before making any connections, and remove any metal jewelry or watches to avoid accidental short circuits.

STEP 1:

Inspect the Cart Plug & Align the Notch

This guide covers the Factory Sync Club Car (LG Chem) connector supplied with your kit. First, check the plug on the cart side for a clean connection — the pins should be straight and free of dirt, corrosion, or debris.

Locate the alignment points on the Factory Sync connector and line up the large notch with the matching keyway on the cart plug to ensure correct orientation.

- *Forcing the connector without aligning the large notch can damage the pins.*



STEP 2:

Connect & Lock the Factory Sync Connector

With the large notch aligned, firmly push the Factory Sync connector into the cart plug until fully seated. Then turn the locking collar clockwise to lock the connection in place.

The connection should be firm with no movement or play once locked.

- *Do not force — if resistance is felt, re-check the notch alignment before turning the collar.*



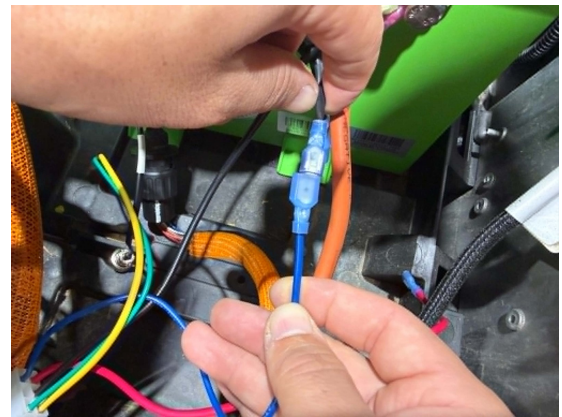
STEP 3:

Connect the 12V Constant Power Supply

Connect the female spade connector on the CAN harness to the 12V constant power supply from the Bolt Reducer. This provides the constant power that powers up the VCM.

Push the female spade connector firmly onto the reducer's 12V constant output until it clicks. The insulated sleeve should fully cover the metal blade with no exposed metal.

- *Ensure the female spade connector on the CAN harness clicks firmly onto the 12V constant output on the Bolt Reducer.*



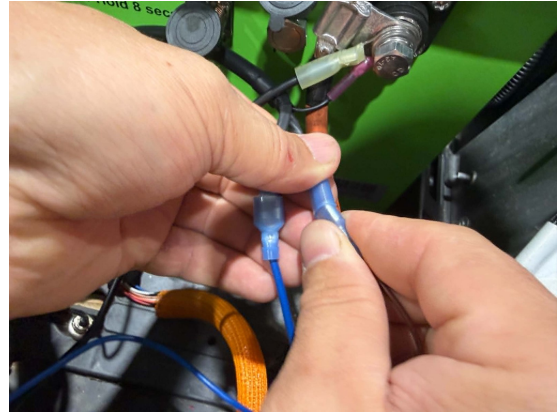
STEP 4:

Connect the Charger Interlock

Connect the charger interlock to the male spade connector on the Factory Sync harness. This enables the charge-enable signal between the cart and the Bolt battery.

Push the male spade connector firmly together until it clicks. The insulated sleeve should fully cover the metal blade with no exposed metal.

- *Ensure the male spade connector on the Factory Sync harness clicks firmly and does not pull apart by hand.*



STEP 5:

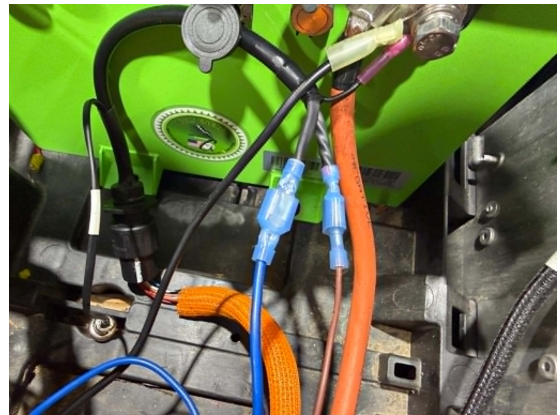
Route & Dress the Harness

Lay the Factory Sync lead alongside the existing factory harness so it follows the same path. Keep it clear of moving parts, sharp edges, and hot surfaces.

Secure any loose wiring with ties so nothing hangs or rubs.

The Club Car will now communicate with the Bolt battery via CAN bus.

- *Verify all connections before powering the cart back on.*



STEP 6:

Turn Battery On & Connect via Bolt USA App

Download the Bolt USA App from the Apple App Store (iPhone) or Google Play (Android). Then turn the battery on by pressing and holding the power switch. Once active, open the Bolt USA App on your mobile device and connect via Bluetooth.

Scroll to the bottom of the Status Display and tap Update under UPDATE FIRMWARE.

■ Do not power off the battery or close the app during the firmware update process.



STEP 7:

Enter Firmware Code, Agree & Confirm Update

The app will prompt you to enter the secure firmware code. Type CLUBLG in the field and tap Agree.

The app will then display the current firmware version — tap Update to begin. The update takes approximately 2 minutes. Keep the app open and on the front screen at all times.

Once the update is complete the battery will restart automatically. The Club Car will now communicate with the Bolt battery via CAN bus and the cart will be fully operational.

■ Do not let the screen lock or switch apps during the update — this could damage the BMS.

