



CAN Cable Installation Instructions

PART NO.
33-036

VEHICLE
Club Car Vanguard

FIRMWARE
CLUBVG



■ WARNING

Make sure the battery is turned OFF before making any connections. Always wear appropriate personal protective equipment - safety glasses, gloves, and other protective gear. Never cut, pierce, or pull on the orange high-voltage cables.

STEP 1:

Locate the Club Car Vanguard Factory CAN Plug

Open the battery box and locate the **Club Car Vanguard factory CAN harness plug** (black multi-pin connector). This is the factory connector the Factory Sync CAN cable will mate with.

■ *Inspect the connector for dirt or debris before connecting.*



STEP 2:

Locate & Align the Notch

Before connecting, locate the **alignment notch** on the Bolt CAN connector (indicated by the red arrow). This notch must align with the matching tab on the Club Car Vanguard factory plug to ensure correct orientation.

■ Forcing the connector without aligning the notch can damage the pins.



STEP 3:

Align & Push Connectors Together

With the notch aligned, firmly push the Bolt CAN connector into the Club Car Vanguard factory plug until fully seated.

■ Do not force — if resistance is felt, re-check notch alignment.



STEP 4:

Confirm Connectors Are Fully Mated

Verify the Factory Sync CAN connector is fully seated into the Club Car Vanguard factory plug as shown. Turn the **locking collar clockwise** to lock the connection in place. The connection should be firm with no movement or play.

■ Give the connection a gentle tug to confirm it is fully locked and secure.

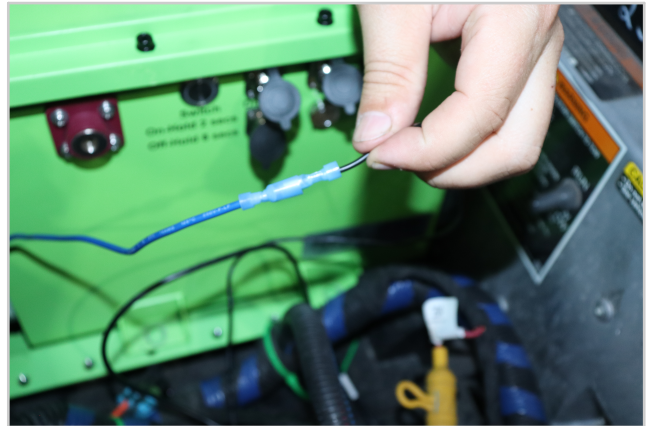


STEP 5:

Connect Spade Terminal to Bolt Reducer 12V Output

Take the **spade connector** from the Factory Sync Club Car Vanguard cable and connect it to the **Bolt reducer's constant 12V output wire**. This provides the constant power needed for CAN bus communication.

■ *Ensure the spade terminal clicks firmly onto the 12V constant output wire on the reducer.*



STEP 6:

Connect CAN Cable to the Bolt Battery CAN Port

Locate the **CAN port** on the Bolt battery (labeled 'CAN'). Insert the small circular CAN connector from the Factory Sync cable into the CAN port and hand tighten the collar until secure.

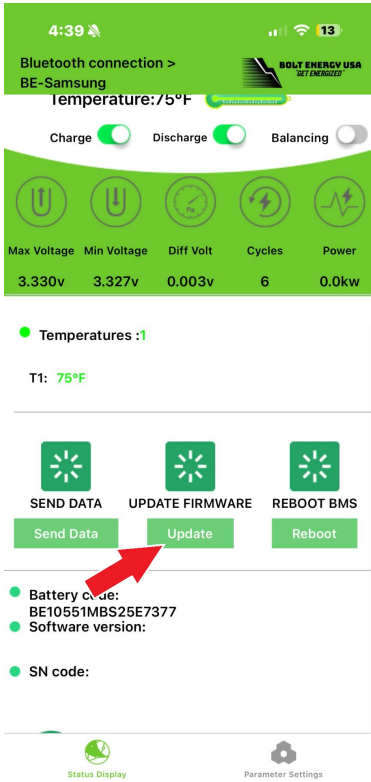
■ *The CAN port is located on the side panel of the Bolt battery next to the BT and PV ports.*



STEP 7:

Download the Bolt USA App, Connect & Select Update Firmware

On your mobile device, go to the App Store (Apple) or Google Play Store (Android) and download the Bolt USA App. Turn the battery on by pressing and holding the power switch. Once the SOC meter is active, open the Bolt USA App and connect to the battery via Bluetooth. Scroll to the bottom of the Status Display screen and tap the Update button under UPDATE FIRMWARE.

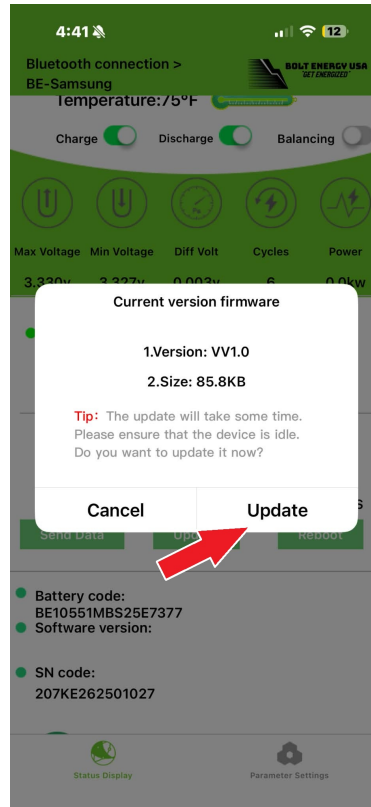
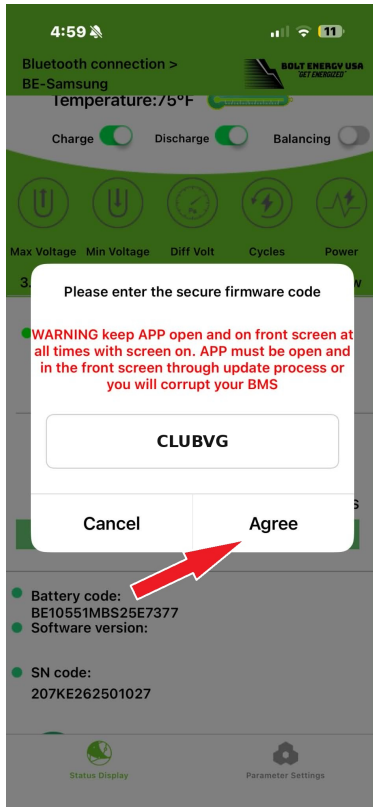


■ Do not power off the battery or close the app during the firmware update process.

STEP 8:

Enter Firmware Code, Tap Agree & Confirm Update

The app will prompt you to enter the secure firmware code. Type **CLUBVG** in the field and tap **Agree**. The app will then display the current firmware version — tap **Update** to begin. The update takes approximately **2 minutes**. **Keep the app open and on the front screen at all times — do not let the screen lock or switch apps as this could damage the battery management system.**



■ Once the update is complete the battery will restart automatically.

STEP 9:

Installation Complete

Once the firmware update is complete the battery will **restart automatically**. The Club Car Vanguard will now communicate with the Bolt battery via CAN bus and the cart will be fully operational.

■ If the cart display does not respond, verify all connections and confirm firmware **CLUBVG** was installed correctly.